

Bromley High Street Improvements – Phase 2

Renewal & Recreation PDS

07 March 2017

Concept Design 2014

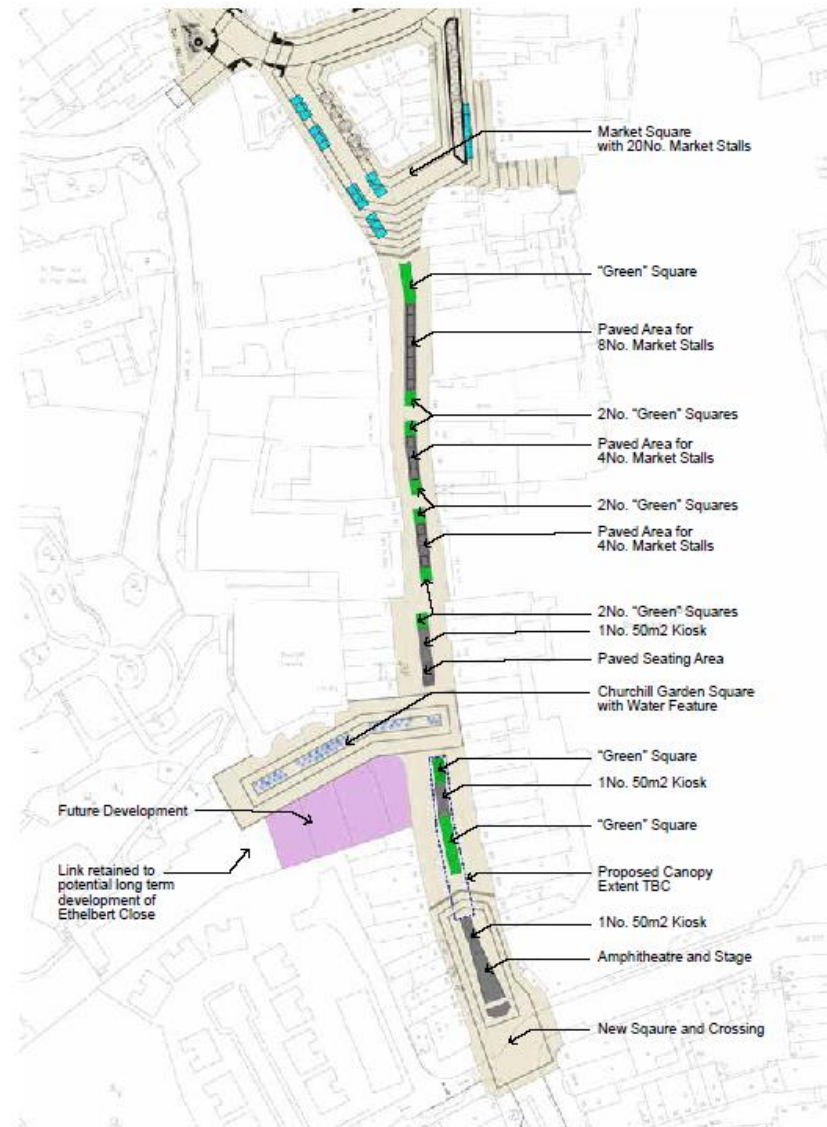
Presented to R&R PDS in November 2014, established the principle of:

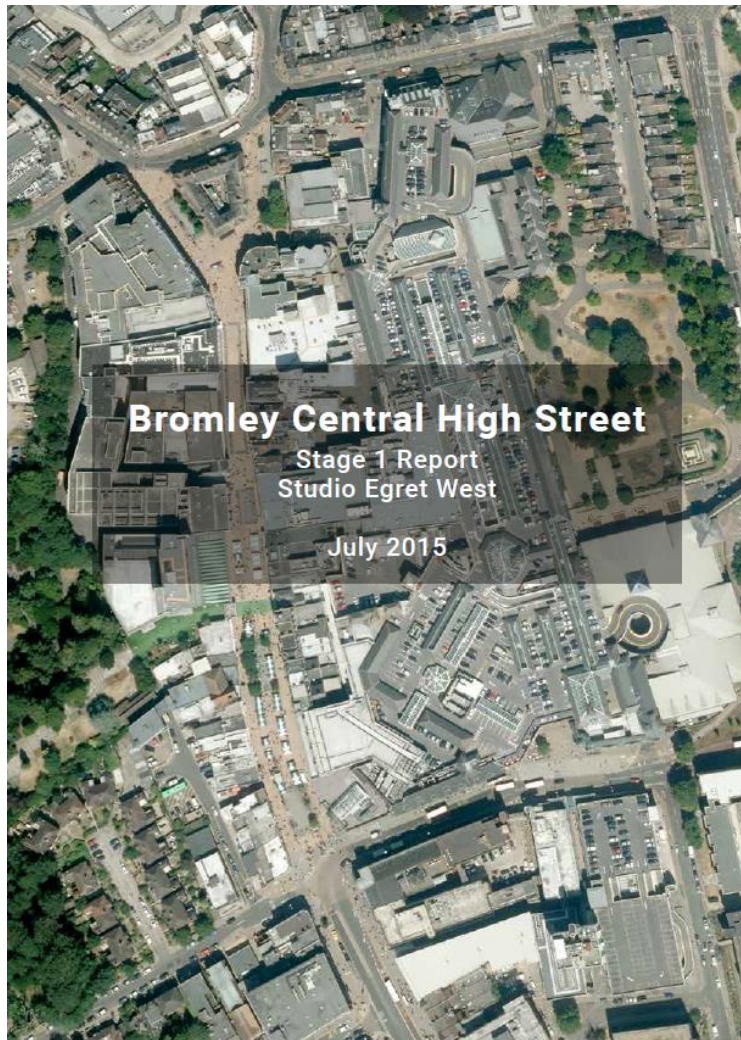
- Extending BNV design & Material treatment
- Creation of distinctive spaces/Green Squares
- New covered areas and new seating
- New commercial space in the High Street.
- Moving the market

**BROMLEY
HIGH STREET**

Initial Concept
07.03.14

PROPOSED PLAN





Stage 1 Consultation and Site Analysis Report

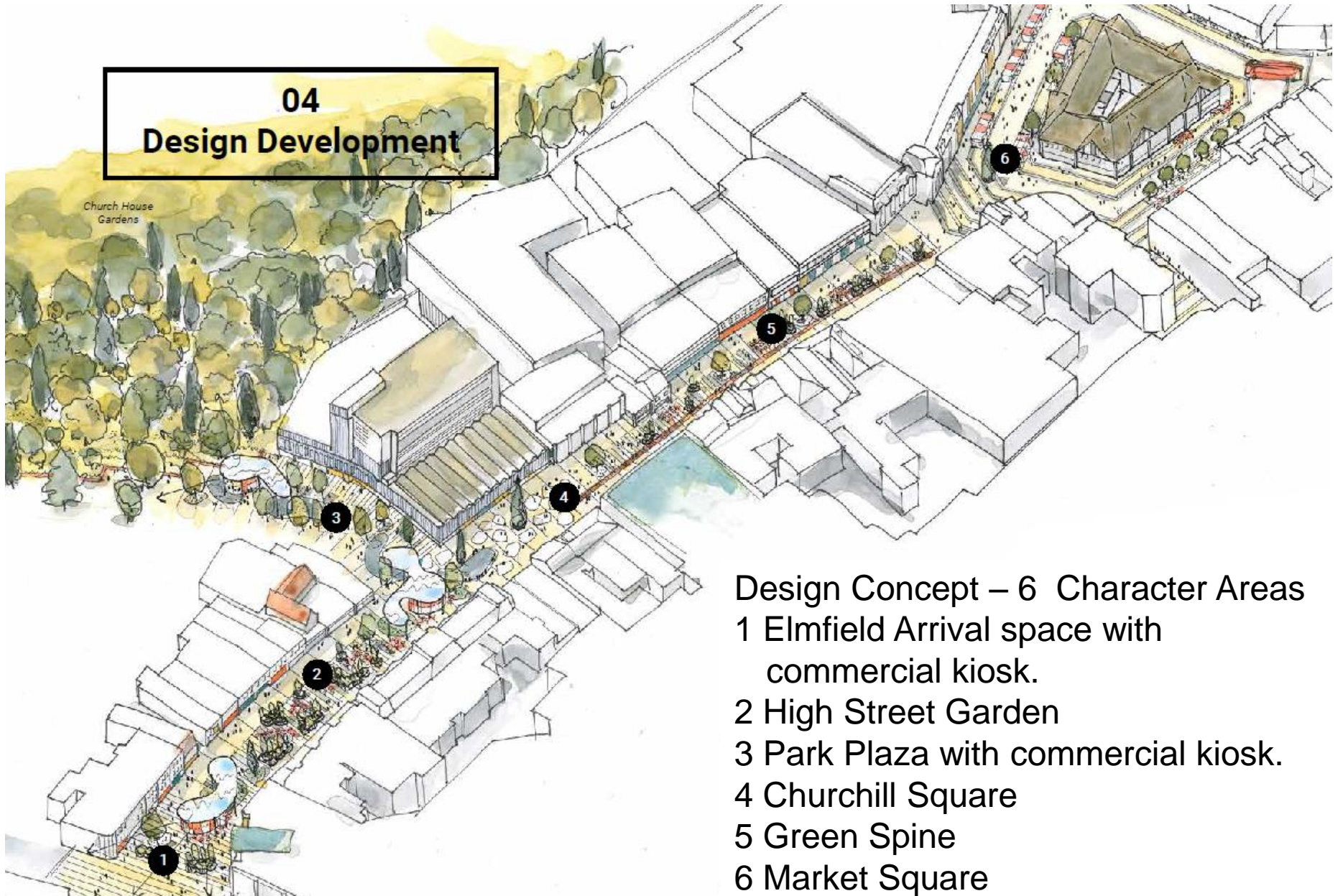
Consultation with public and local businesses after which the following design principles were established:

1. Introduce a hierarchy of public space where people can dwell.
2. Green the High Street.
3. Create shelter within the high street for year round enjoyment.
4. Create better links to Bromley's greenspace
5. Encourage street activity and enhance pedestrian experience.

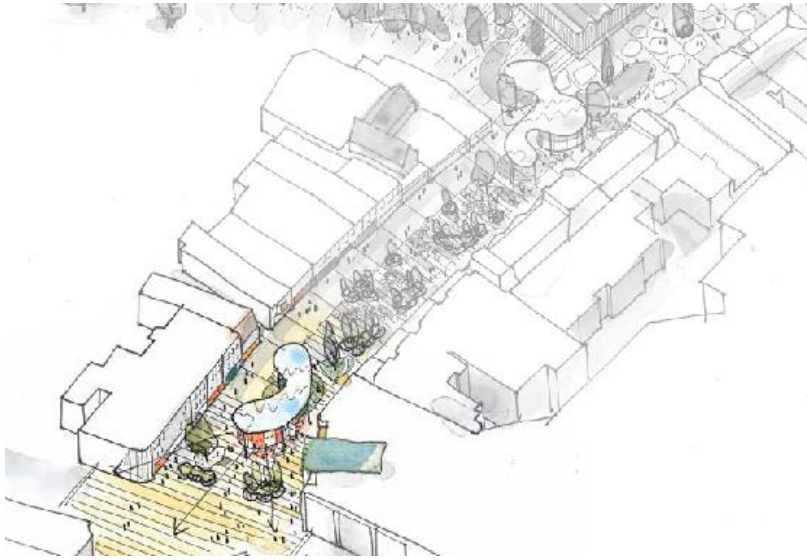


04 Design Development

Church House
Gardens



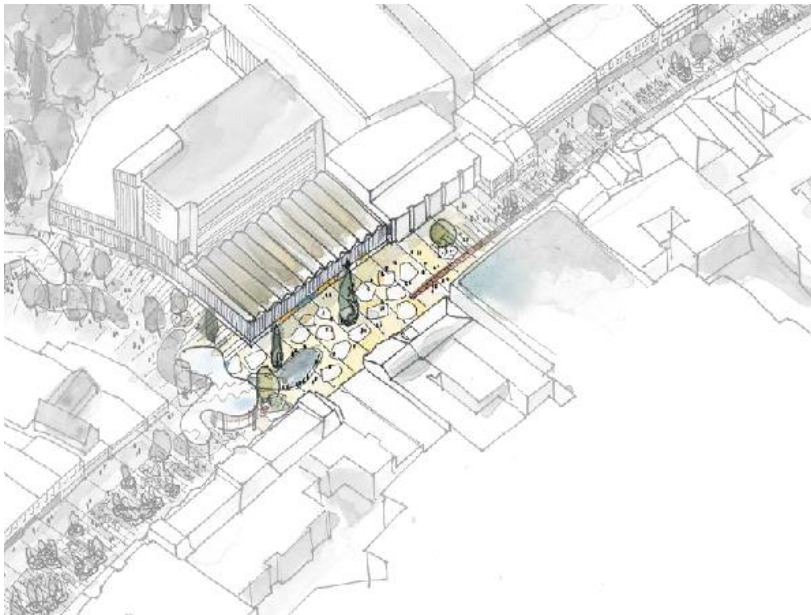
- Design Concept – 6 Character Areas
- 1 Elmfield Arrival space with commercial kiosk.
 - 2 High Street Garden
 - 3 Park Plaza with commercial kiosk.
 - 4 Churchill Square
 - 5 Green Spine
 - 6 Market Square



Elmfield Arrival Space



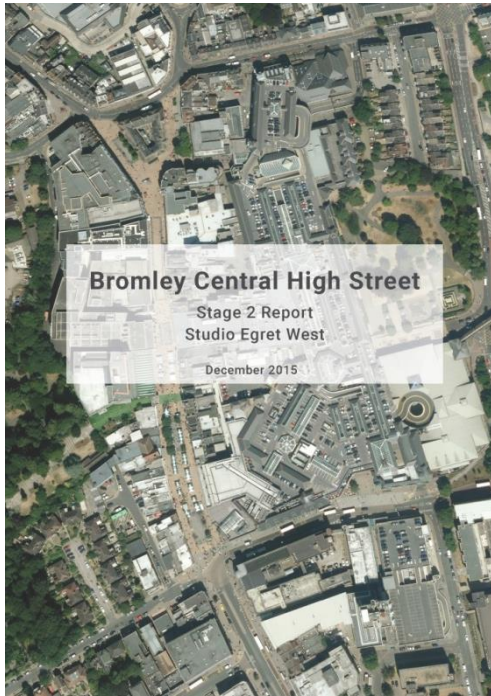
High Street Garden



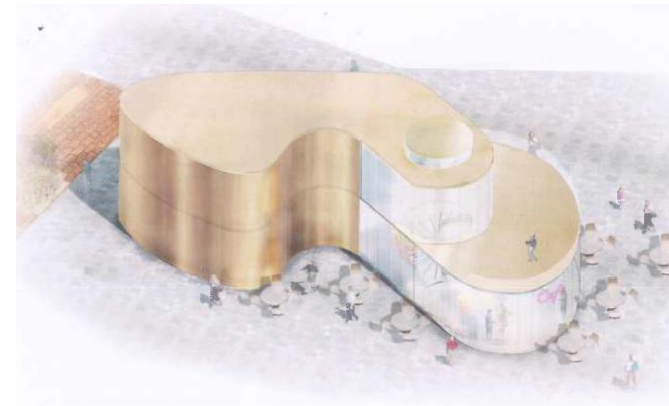
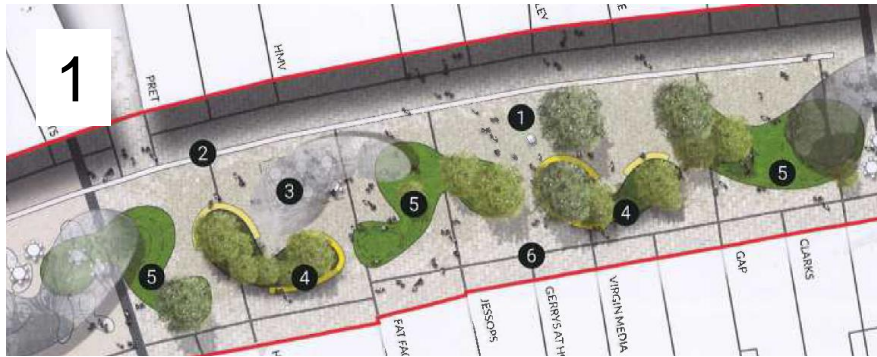
Churchill Square



Market Square



Stage 2 Concept Design -
endorsed at the Executive
2nd December 2015.



Developed Design concepts:

1. Garden space comprising Broom shaped planters.
2. The market relocated north with stalls spaced out.
3. Market Square 'activated' with market stalls.
4. Mirrored Canopies/commercial units 'bookending' the lower half of the High Street.

Stage 3 Developed Design

Design changes further to Stage 2:

- Market kiosks on Market Square.
- Pop-up market stalls located on the west side of the High Street.
- Commercial units reduced in size and separated from mirrored canopies.

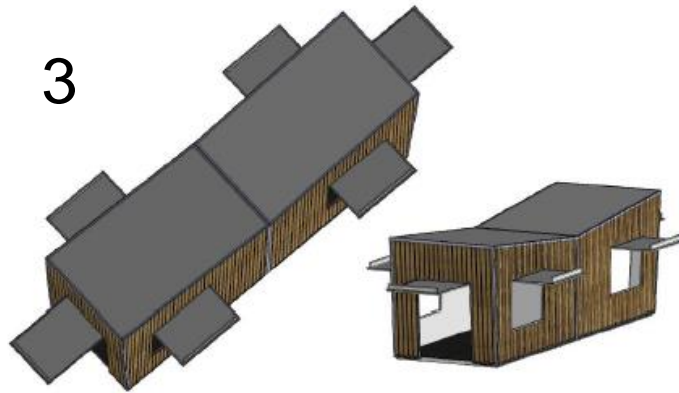
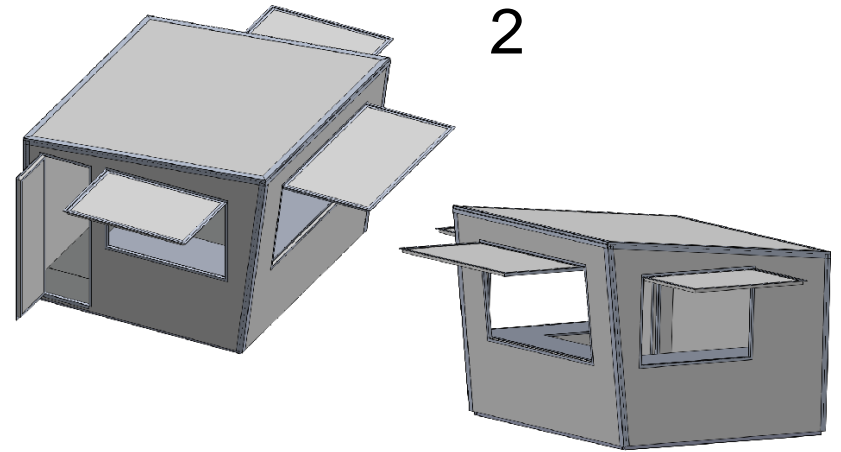
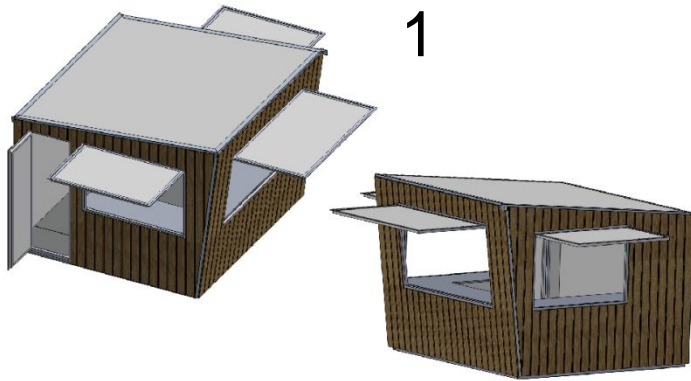
Further design changes in response to recommendations by members in October 2016.

- Smaller planters.
- Relocated commercial units.

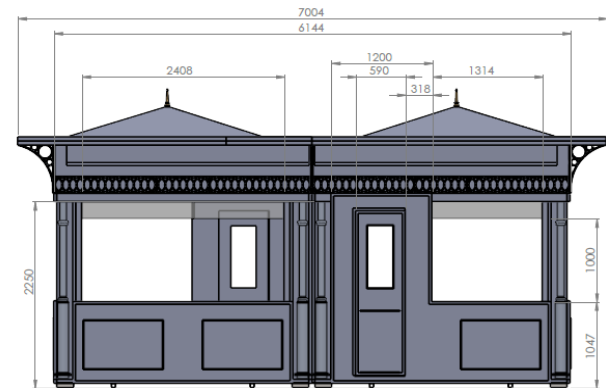




Market Square Kiosks

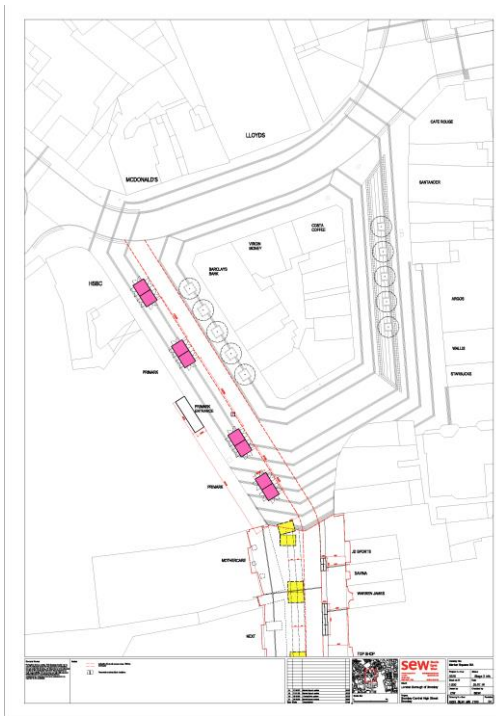


4



- 1 Timber clad 3m x 3m kiosk
- 2 Mirrored steel 3m x 3m kiosk
- 3 Back to back arrangement.
- 4 Traditional 3m x 3m kiosk

Market Street

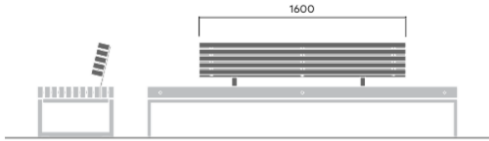


Relocated market.

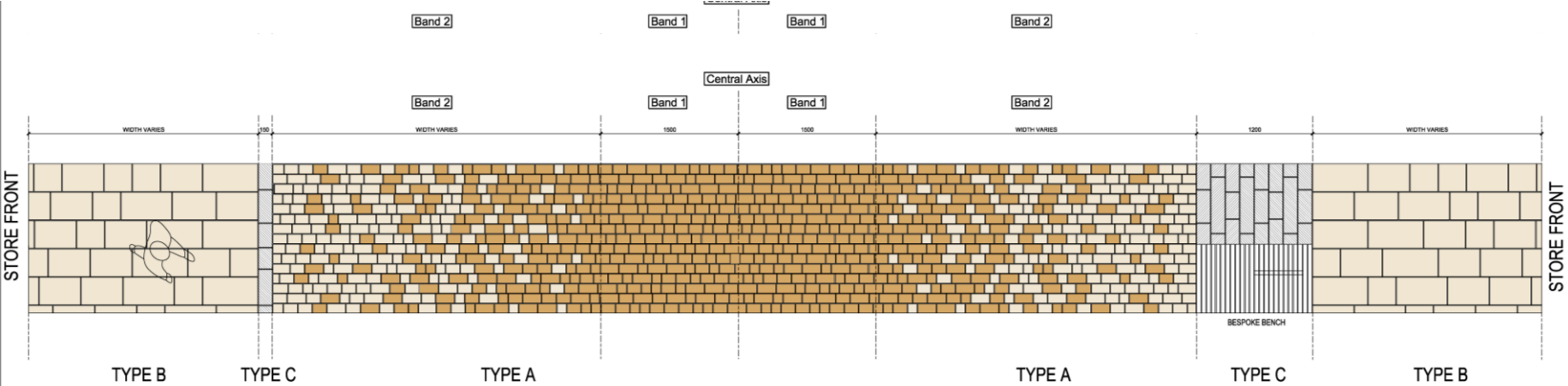
- Market stalls on western side of the high street to enable an emergency access path and seating on the eastern sunny side.
- Stalls predominantly 'back to back' to avoid 'backs' to shops.



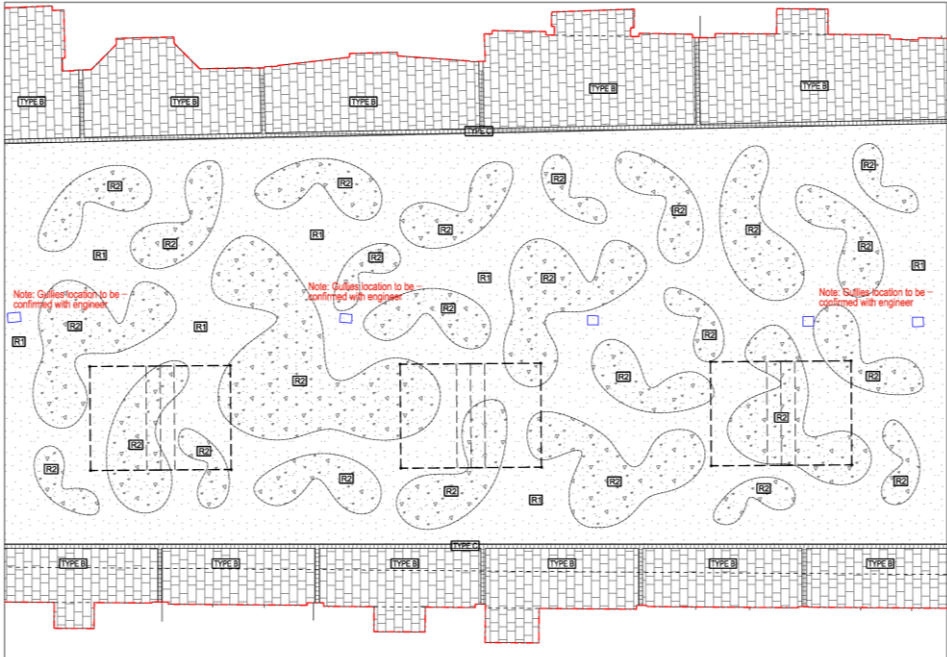
Modular street furniture and paving pattern for market street.



VESTRE, MODULAR PORTO BENCH



Churchill Square



01 Enlarged Churchill Plaza paving plan

- Annotations**
- R1 Resin Bond surface, 2-5mm gold in buff resin (or equivalent colours)
 - R2 Resin Bond surface, 2-5mm silver grey in grey resin (or equivalent colours)
 - Type B 300x300mm, 300x450mm & 300x500mm "Sareycom" granite G672 bush hammered finish.
 - Type C Carriageway paving, "crystal black" flamed finish flush kerb.

New multi-purpose events space, with Bloom flower petals design in contrasting resin bound gravel.





HOME STORES

HOME STORES

Bhs

hotter

hotter

next

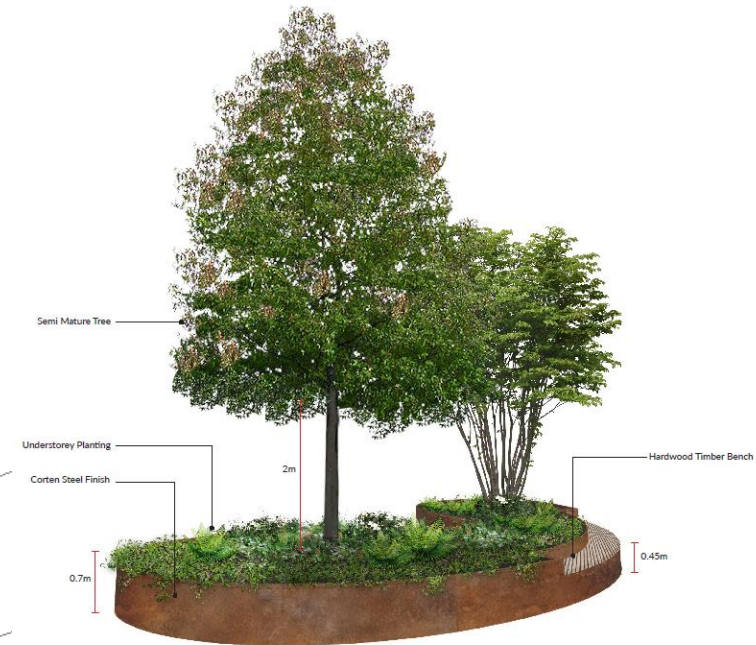
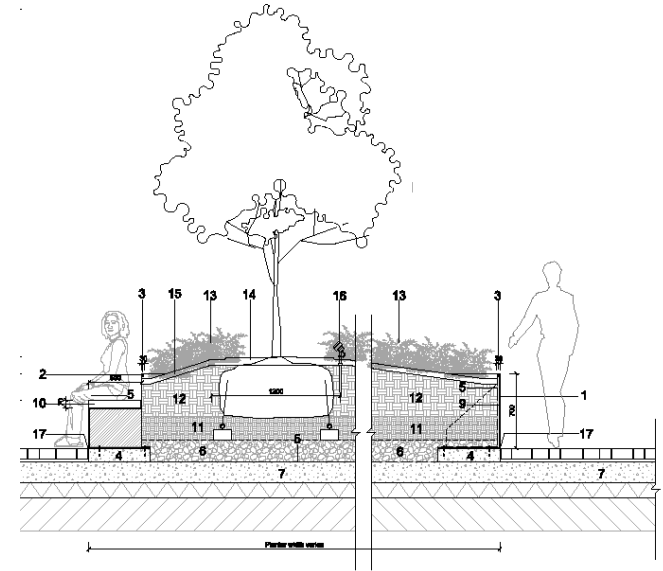
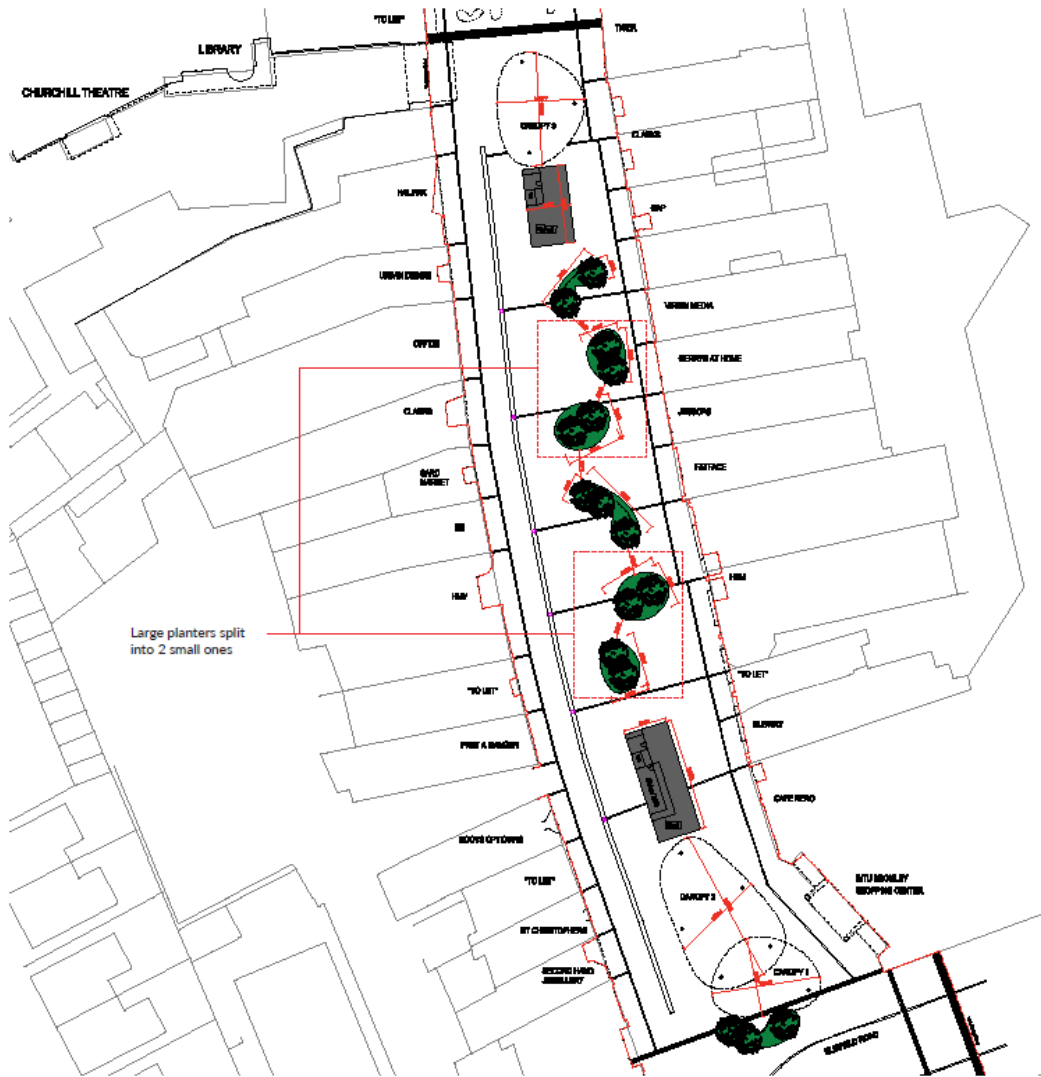
M&S

MARKS & SPENCER

STORE CLOSING SAVE 80% OFF

50% OFF

High Street Garden





Section through High Street looking north



High Street planter elevation looking east





Similar Planters @ Kings Cross



Planting, lighting and integrated seating



Bromley Town Centre Scheme Costs	£	£
Public Realm Works		
Site Clearance	50,000	
Drainage	171,000	
Earthworks	190,280	
Carriageway works	119,500	
Paved Areas	991,000	
Street furniture	361,920	
Street lighting	317,800	
Total for Public Realm Works		2,201,500
Market Development		
Market infrastructure	108,500	
Pop up stalls (21)	21,000	
Semi-permanent kiosks (8)	699,300	
Total for Market Development		828,800
Cleaning machine		55,000
Contingency (10%)		308,530
Management & Supervision		170,000
Total Scheme Costs		<u>3,563,830</u>